

**THE MESSENGER**  
**St. John Lutheran Church of Boerne**  
**A Lutheran Congregation in Mission for Christ**



JANUARY 2016

Volume 87 No. 1

## **Transition**

As I write this article my tenure as Senior Interim Pastor at St. John Lutheran is approaching the point of termination. The Call Committee has been doing a diligent and efficient job of interviewing potential pastors to fill this position semi-permanently. No pastor is a permanent pastor. Thankfully, the permanence that you are promised is the presence of the Spirit of God in your midst. The Word of God and the holy sacraments of Christ's presence among you were here long before Pastor Schulte arrived and will remain long after I am gone. Thanks be to God!

Transitions are never easy; sometimes they are uncomfortable. Six months ago many wondered about the wisdom of the Church Council inviting an eighty year old man to serve as interim Senior Pastor. Some may still wonder about that wisdom. The whole point of discomfort with change relates to the fear of the unknown. What kind of a person will he be? Will he be friendly, a good preacher, a community leader, a good Bible teacher, a competent administrator? Those are all unknown qualities; they give one concern, if not fear.

Disciples of Jesus must trust that God will provide adequate and competent leadership for his church. Fear gives way to trust.

As my day of departure grows closer I reflect on the past six months with great gratitude. My gratitude goes first to God who called me to this place and has given me the great privilege of sharing God's word with a congregation of Believers.

Secondly, I am grateful to a gracious congregation for the welcome that Judy and I received when we arrived the last days of July, a graciousness that has not abated over the months. St. John Lutheran is the fifteenth congregation in which Judy and I have lived for shorter or longer periods. One, perhaps two of those previous fourteen has matched St. John in graciousness and fervent devotion to the Lordship of Jesus Christ, but none have exceeded St. John in those qualities.

Thirdly, I am grateful to two co-pastors who have shared the ministry with me. I have great respect for Pastors Carpenter and Bergquist. They have both carried a heavier load than I and are deserving of great appreciation from the congregation. I hope that all who read these words will express appreciation to those faithful servants for their ministry.

Fourthly, I am grateful for a competent staff all of whom perform their responsibilities admirably. I have not changed my mind from an impression that I gained within the first two weeks at St. John; this congregation is overstaffed. That is an issue for the leadership of the congregation to address. That is a quantitative matter; my reflection is on the quality of the staff. I could not ask for a finer group of people with whom to work. Each member of the staff deserves your recognition and expressions of appreciation.

I am certainly not ready to say good-bye. I may never do that because I will always carry a bit of St. John with me wherever I go, (at the same time take a bit of South Texas with me). However, this may be the last newsletter that I will write at St. John. Therefore, it seemed right to express the love that both Judy and I have for you, the appreciation that we have for your gracious welcome, the joy we share in knowing that many of you are devoted to the Lordship of Jesus Christ and the warm memories that we will carry with us to the great Pacific Northwest. (But, make no mistake: We will always pull for the Seahawks when they play the Cowboys).

Gratefully,  
Pastor Neal; Snider

## Special Fund Request – Seminary Fund

Many of you may not realize that we have a dedicated fund to support Seminary students from St John. The fund was established in 1985 and through the years it has supported quite a few Seminary students.

Currently, Makala Cook is attending Trinity School for Ministry in Ambridge, PA. We are very proud of her accomplishments so far and look forward to the day when she completes her studies and formally begins her journey with the Lord.

Now, we are blessed with another member who has recognized and acknowledged the call of the Lord. Our Youth Director, Matt Olson, will begin a new faith journey in January as he enters into a Master of Divinity program through an online program at the Institute of Lutheran Theology. Matt will attend part time with the goal of minimal disruption to his current duties and family.

The Council has approved Matt's request to use the Seminary Fund. Now we need your support to make this dream come true. First, and foremost, pray for Matt and Makayla, that the Lord will lead and guide them on their respective journeys. Secondly, we need contributions to the Seminary Fund. Your contributions will go to a fund dedicated for the support of seminary students from St John Lutheran Church. Please consider donating to the Seminary Fund.

### Call Committee Update

December 15, 2015

Greetings St John Members,

Your Call Committee has been meeting several times a week recently. This is an update on our progress.

We are fully involved in evaluating a group of candidates for our next senior pastor. In earlier steps, we drafted an interview guide, a job description, and an evaluation sheet. Now we are proceeding with initial interviews; we have used videoconferencing for some interviews, and some have been in person. Soon we will begin the next step, follow-up interviews with selected candidates. Those follow-up interviews and committee evaluations will produce a shorter list of candidates. We are anxious to move quickly, but realize we are on God's timeline.

We are blessed to have a Call Committee with a variety of talents and skills, where each member's opinions are heard, and we respectfully discuss our disagreements. We ask the Congregation for continued prayers. Please pray for our wisdom, discernment, and patience as we seek God's will for His Congregation at St John.

Blessings,

Brad Morrison and Scott Kramer

[brad.morrison@innove.com](mailto:brad.morrison@innove.com), 210-380-6189

[skramer43@gmail.com](mailto:skramer43@gmail.com), 512-914-3121

### Council Contacts

President, Don Baker - 830-431-0521  
 Treasurer, Sherry Speir - 210-710-7724  
 Administration Chair, Scott Kramer - 512-914-3121  
 Children's Ministry Chair, Debbie Jordan - 210-325-5873  
 Congregational Life, Pam Hegener - 830-377-1358  
 Worship, Carrie Tyner - 210-363-1223  
 Outreach Chair, Randy Ehmen - 210-488-8059  
 Mission Chair, Sara Moldenhauer - 210-219-3031

Vice-President, Skip Stefansen 818-324-1510  
 Secretary, Sherri Lowrie 210-842-0999  
 Adult Ministry Chair, James Mazock 210-844-4769  
 Congregational Care Chair, Frank Bush - 830-336-2302  
 Youth Ministry Chair, Brandon Ross - 210-215-80162  
 Stewardship Chair, Kyle Gass - 210-355-5567  
 Property, John Schmedemann 210-415-5197  
 Youth Member, Joshua Carpenter, Emily Murley

The Messenger is the official monthly publication of St. John Lutheran Church

P.O. Box 1081, Boerne, Texas, 78006 830-249-3651 Fax 830-816-6449

Distribution: The Marvelous Mailers Printing graciously provided by: LEBCO Graphics



## A Special Celebration

During the Christmas dinner on December 6<sup>th</sup>, we celebrated a special milestone. Pastor Mariola was honored for 25 years of ordination and service to the Lord. She was **given a framed certificate, a cross necklace, and a beautiful cake.**



**If you weren't there for the celebration be sure to thank her the next time you see her.**



## St. John Lutheran Stewardship Committee January 2016

### Are you letting God use you?

Stewardship is serving, helping, and giving, but love is the basis for stewardship. Without love, our good deeds are empty and without merit. The first act of true stewardship is to ***“love the Lord your God with all your heart and with all your soul and with all your strength” (Deuteronomy 6:5).***

Jesus called this the most important commandment (Mark 12:29, 30). With that love for the Lord in us, we are enabled to be good stewards. Then we can do acts of good stewardship, acts of true devotion.

As a church, St. John has expenses and monetary obligations to meet: employee salaries and benefits, maintenance, utilities, insurance, etc. Our tithe pledges provide for the cost of keeping St. John Lutheran Church operational.

**If you have not yet submitted your 2016 tithe pledge card, please do so in a timely manner. Your pledge card can be put in the Sunday collection plate or dropped off at the office.**

Above all, love each other deeply, because love covers over a multitude of sins. Offer hospitality to one another without grumbling. Each of you should use whatever gift you have received to serve others, as faithful stewards of God's grace in its various forms. If anyone speaks, they should do so as one who speaks the very words of God. If anyone serves, they should do so with the strength God provides, so that in all things God may be praised through Jesus Christ. To him be the glory and the power for ever and ever. Amen. ***(1 Peter 4: 8-11)***

Your Brother in Christ

Richard F. Wagner, Chair

St John Lutheran Stewardship Committee

## St. John Lutheran Church

### Income and Attendance Comparison

Monthly Operating Income	Jan	Feb	March	April	May	Jun	Jul	Aug	Sept	Oct	Nov	Dec	YTD
2015	113,882	78,825	97,094	88,662	85,710	78,144	76,808	108,019	83,790	76,649	98,797		\$986,380
2014	79,577	80,376	91,001	83,972	69,069	85,906	71,314	93,774	69,963	72,021	97,063	181,124	\$1,075,160
2013	73,985	80,612	119,099	73,857	72,685	84,579	68,254	77,038	103,643	72,038	74,104	238,728	\$1,138,622
2012	92,201	70,693	73,719	92,636	84,668	77,665	86,270	76,057	81,583	64,804	83,705	234,934	\$1,118,935
2011	79,723	71,904	67,252	80,101	130,107	60,079	88,299	69,908	60,118	91,034	64,732	140,062	\$1,003,319
Avg. Wkly. Worship Attendance	Jan	Feb	March	April	May	Jun	Jul	Aug	Sept	Oct	Nov	Dec	YTD
2015	380	403	390	521	370	464	309	367	349	347	364		388
2014	439	419	419	509	420	381	378	378	392	398	383	425	412
2013	438	530	543	432	424	379	392	397	404	415	381	426	430
2012	393	477	463	566	424	386	361	392	351	369	445	423	421
2011	424	424	557	411	411	343	381	400	393	419	381	581	427



### Dear St. John Members,

Thank you so much for the wonderful celebration of the 25<sup>th</sup> Anniversary of Ordination. You made it very special for me.

The cake was truly amazing! Thank you for the beautiful cross from James Avery. I really like it! I have also received many cards, kind notes and gifts of love. I thank each of you for your expression of love.

A special thank you to Don Baker, Pam Hegener and the Congregational Life Committee for their efforts and hard work.

You all are truly AWESOME and I thank you from the bottom of my heart.

In Christ, Pastor Mariola Bergquist

**This Advent Season and Christmas** could not have been so warm and enduring without each of you as in any season throughout the year. Thank you especially to all Families reading our Advent Candle Readings. Also, a thank you to all Altar Guild, Acolytes, Communion Assist, Assisting Ministers, Lectors, Ushers, Staff, Choir, TJ Bazzoon and our wonderful Pastors who help make our Worship time such a Blessing. Sincerely, Carrie Tyner, Worship Chair

A Special Thank You to all who decorated our Sanctuary and areas of our Church to make it such a beautiful and inviting place to come for our time at St. John Lutheran. Blessings, Carrie Tyner, Worship

### Visitation Ministry

Pastor Mariola Bergquist –

Email - [pastormariola@stjohnlutheran.com](mailto:pastormariola@stjohnlutheran.com)

Nursing Home Visits

Kendall House – 3<sup>rd</sup> Tuesday

Cibolo House – 3<sup>rd</sup> Tuesday

Menger House service –

3<sup>rd</sup> Sunday at 3:30pm

Riverview - 3<sup>rd</sup> Wednesday

Care Choice – 3<sup>rd</sup> Wednesday;

Service: 1:15 pm

Town and Country – 3<sup>rd</sup> Wednesday

Service: 3:00pm

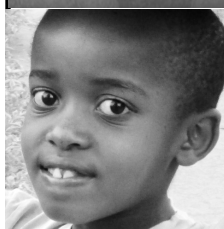
Cibolo Creek – 4<sup>th</sup> Wednesday

Home Visits: Tuesdays – 1<sup>st</sup>, 2<sup>nd</sup>, 4<sup>th</sup>

Wednesdays – 1<sup>st</sup>, 2<sup>nd</sup>



**Rafiki Foundation, Inc.**  
Child Sponsor Report



**Quarter 2, 2015 -  
Dadi Ishimwe CI014**

**Current Grade Level:**  
Grade 4

**Date of Birth:** Jul/29/2005

**Arrived at Village:** Mar/01/2009

**Rafiki Mother/Parents:** Pauline D

**Village:** Rwanda

### **Educational Update:**

Dadi is a very bright boy with a passion to learn. He is always curious and likes to ask questions to understand fully. He is doing well in every subject, but his favorite subjects are music and art. He loves playing the piano and recorder and accompanied his class on the keyboard when they sang "Alouette" for the Celebration of Arts. He did a great job!

### **Prayer Requests:**

Pray that Dadi will continue to develop a godly character, growing in focus and perseverance. May God equip and prepare him for the future He has in store for him. May he continue to hunger to know God fully, and desire to search His word for truth and wisdom.

### **Write to Dadi**

The Rafiki children love to receive mail from their sponsors. Please send letters to: PO Box 6856, Kacyiru, Kigali Rwanda, EAST AFRICA. You may send cards or any other item that fits in a standard size envelope such as bookmarks, stickers, pictures or a postcard. Please do not send packages, checks or cash to the Village address.

### **Honoring our Senior Members (80+)**

#### **With Birthdays In January 2016**

Burleigh Arnecke

Roland Windercker

Elaine Moore

Charles Kuentz

LeRoy Bartman

Lorraine Massey

Dixie Pfeiffer

If your turning or are already 80+  
and you do not see your birthday please contact Deneice

# Children's Faith Formation

Lyn Anello \* Director of Children's Ministries \* 249-3651 ext. 210 \* [lyn@stjohnlutheran.com](mailto:lyn@stjohnlutheran.com)

Many thanks from Blessings In a Backpack to our children and church members who generously contributed to the Children's Ministry Christmas outreach project! We raised \$180 and LOTS of needed food items!!



## KIDS CLUB - Weds. night

3rd thru 5th Grade

We will be starting a new study!!

"Answers for Kids" is a great curriculum that will explore questions about the Bible, the earth, creation, etc. helping students see how the Bible relates to all of life!

Our St. John FLOCK delighted the congregation with their performance of "Just a Little Christmas"!! Thanks to all of our SS teachers and volunteers who helped to make our

## It's Summer Camp Registration Time!!!

### Saints & Superheroes



**CAMP EBERT:** June 19—24, 2016 4th—6th Grades\* \$410

**CAMP CHRYSALIS:** July 10—15

1st—3rd grade\* 1/2 week (7/10—7/13) \$265

2nd—6th grade\* Full week \$390

\*Grade completed in the 2015-2016 school year

St. John will gift each child (SJLC member) \$100 for ONE camp. Multiple camp and sibling discounts are available. **SCHOLARSHIPS ARE AVAILABLE!!**

**PLEASE CONTACT** [lyn@stjohnlutheran.com](mailto:lyn@stjohnlutheran.com) to make your reservation, or for more information. Please **DO NOT** make reservations at the Cross Trails web site. St John has a group reservation, and has already paid the deposit. Thanks!!

### Sunday School Schedule

**9am:** Parent drop off/sign in – Luther Hall

**9-9:10am:** Snack & Fellowship

**9:10-9:15am:** Prayer

**9:15-9:25am:** Pre-K thru 2nd –Music in Faith Hall

**3rd thru 5th - Group opening lesson—Luther Hall**

**9:25am:** Release to class with teachers

**10:15am:** Class dismissal; Parent Pickup/sign out from Faith Hall

**Please note:** Parents **MUST** sign children **IN** and **OUT**. Children will not be released without a parent/guardian (18 years or older).

### FIRST COMMUNION CLASSES

Attn: 5th Graders

First Communion classes will be held on Sunday mornings during Lent!! We are expanding our program to allow for a deeper understanding of this Holy Sacrament.

More details to follow, so stay tuned!

# Adult Faith Formation

Shannon Brehmer \* Adult Faith Formation Coordinator \* 830-249-3651 ext 212 \* shannon@stjohnlutheran.com

## Sunday School SCHEDULE

### Classes and Locations:

**"Martin Luther—His Life and Teachings"** led by Pastor Snider is meeting in Room 118. This class session with Pastor Snider will meet for 5 weeks.

**"God Talk"** led by Peggy Hoppes is meeting in Room 119. This new class will focus on theology.

*"Theology, the study of God, is all about asking questions and learning what we believe and why. Beginning in January, we will be working through those questions together as we 'God Talk'."*

**"Faith Steps" Class: Room 214** In January, this class will continue their study of the book, "Family Driven Faith."

**Seekers: Room 216** This class will continue their study of the Apocrypha.

**"Ask, Seek, Knock" Class: Room 213** This class will continue their study on the OT prophets.

**Breakfast Club: Saxon House** This class will begin a new study on Creationism.

**The "Logos" Class:** This class will merge with Pastor Snider's class for the month of January in Room 118.

## DAVE RAMSEY'S FINANCIAL Peace UNIVERSITY

Everyone can learn to be better stewards of the gifts God has given us, although few of us have ever been through any formal training on how to handle money. Prayerfully consider attending the Financial Peace University so that you can finally get your college degree in handling money.

We look forward to seeing you there!

### Class Times and Locations:

- Classes will meet for 9 weeks
- Sunday Morning from 9:00am-10:30am, starting Jan. 10th
- Tuesday evening from 7:00pm – 8:30pm, starting Jan. 12th
- Classes will be held in Room 117, in the Education Wing.

**Please call or email Tim below to register for the class.**

Coordinator Information: Tim Christ 210.665.3962  
timothydavid.christ@gmail.com

### Spring Weekday Class Schedule:

#### Monday

- **Men's Study**, 7 pm in the Shepherd House

#### Tuesday

- **Men's Breakfast**, every other Tuesday at 6:30 am
- **Women's Book Discussion**, 12-1 pm in Room 117.
- **Dave Ramsey's Financial Peace University**, will begin on Jan. 12th from 7-8:30 pm in Room 117.

#### Wednesday:

- **New! Cross Talk, Morning**, for women, 9-11 am in Room 118. New study titled "Hosea" by Jennifer Rothschild will begin on January 13th.
- **Koinonia**, studies begin at 7:00 pm

#### Thursday

- **Precept**, for women, 9:15 am in Room 118.

## Koinonia

**Wednesday Nights**  
starting Jan. 6th at 5:45 pm

**Dinner, Fellowship, Study,  
Worship**

New 5 week study for adults:  
"Sticky Faith: Everyday ideas to  
build lasting faith in your kids."

This class meets in Room 119.

### "Ponder"

**St. John Women's Winter Retreat**

*"Let the WORD of Christ richly dwell within you."*  
Colossians 3:16

**January 29-31**  
**At Lutheran Camp Chrysalis**

**Cost: \$85**

**Registration forms available at church!**

### St. John Men's Retreat "Holy Ambition"

**February 4-6th**  
**at Blueprint Ministry Retreat Site,**  
**San Antonio**  
**Cost: \$75**

**Registration forms available at church!**



# —Youth Faith Formation—

Matt Olson \* Director Youth Ministries \* 830-249-3651 ext 205 \* matt@stjohnlutheran.com

Looking back on Thanksgiving Turkey Fry & Christmas preparations...



How the work gets done. "Good job boys!"



Deck the halls...Luther Hall that is!

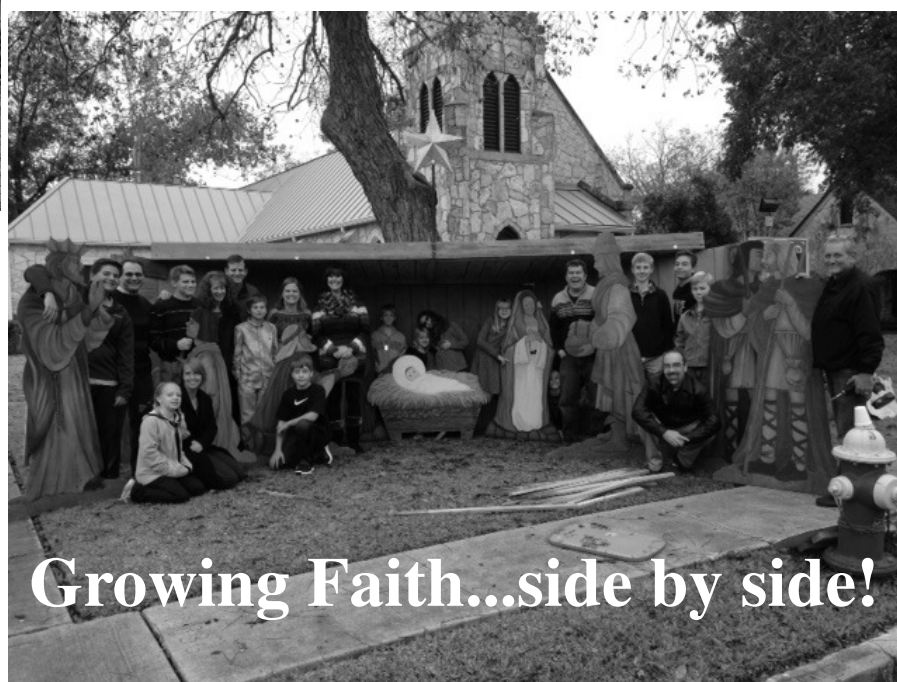


Watch for sprinkler lines.

COMING SOON

## Winter Retreats:

- \* **Women's Retreat:** *ponder*  
January 29-31
- **Men's Retreat:** *holy ambition*  
February 4 - 6
- \* **Youth Quake:** *unbreakable*  
February 26 - 28
- \* **Sr. High Ski Pilgrimage:** *park it*  
March 12 - 19



Growing Faith...side by side!

**The Messenger**

St. John Lutheran Church  
315 E. Rosewood  
P.O. Box 1081  
Boerne, TX 78006  
Return Service Requested

**Happy New Year!!**

NON-PROFIT  
ORGANIZATION  
U.S. Postage Paid  
Boerne, TX 78006  
Permit #7

		January 3	January 10	January 17	January 24	January 31
<b>Acolytes</b>	<b>8:00</b>	Madyson Arnold	John Pounds	Viktor Lewis	Megan Nauman	Peyton Brehmer
		Gavin Shields	Josh Pounds	Claire Murley	Will Pearson	Kendra Pfeiffer
		Aden Shields		Mallory Klein		
	<b>10:30</b>	Evan Ross	Isabella Grossman	Jake Allen	Serena Ross	Molly Klutts
		Bradley Morrison	Addison Mazock	Hayden Allen	Hadley Robbins	Lydia Parks
		Balie Bowen		Angelina Zigler		
		Mya Olson		Ana Wyle		
		Dean Knippa				
<b>Assisting</b>	<b>8:00</b>	Doris Beath	Dennis Ruck	Paul Harris	Barney Gavin	Paul Harris
<b>Ministers</b>	<b>10:30</b>	James Meckel	Glorify!	Bruce Hoppes	Dana Broddrick	Randy Ehmen
<b>Altar Guild</b>	<b>8:00</b>	Marlene Barnes, Lee & Lori Romain				
	<b>10:30</b>	MaryAnn Eichman Dennis & Lois Ruck				
<b>Council Chair</b>	<b>8:00</b>	Scott Kramer				
<b>Communion Assnt.</b>	<b>10:30</b>	Sara Moldenhauer				
<b>Flowers</b>		Debbie Holman				
<b>Lectors</b>	<b>8:00</b>	Kaitlin Schneider	Scott Kramer	Carrie Tyner	Wanda McCarthy	Michael Hoepfner
	<b>10:30</b>	Janet Blackburn	Larry Smith	Christi Hardin	Marcy Voss	Chip Putnam
<b>Ushers</b>	<b>8:00</b>	Richard Wahl Team				
	<b>10:30</b>	Johnny Moldenhauer Team				