

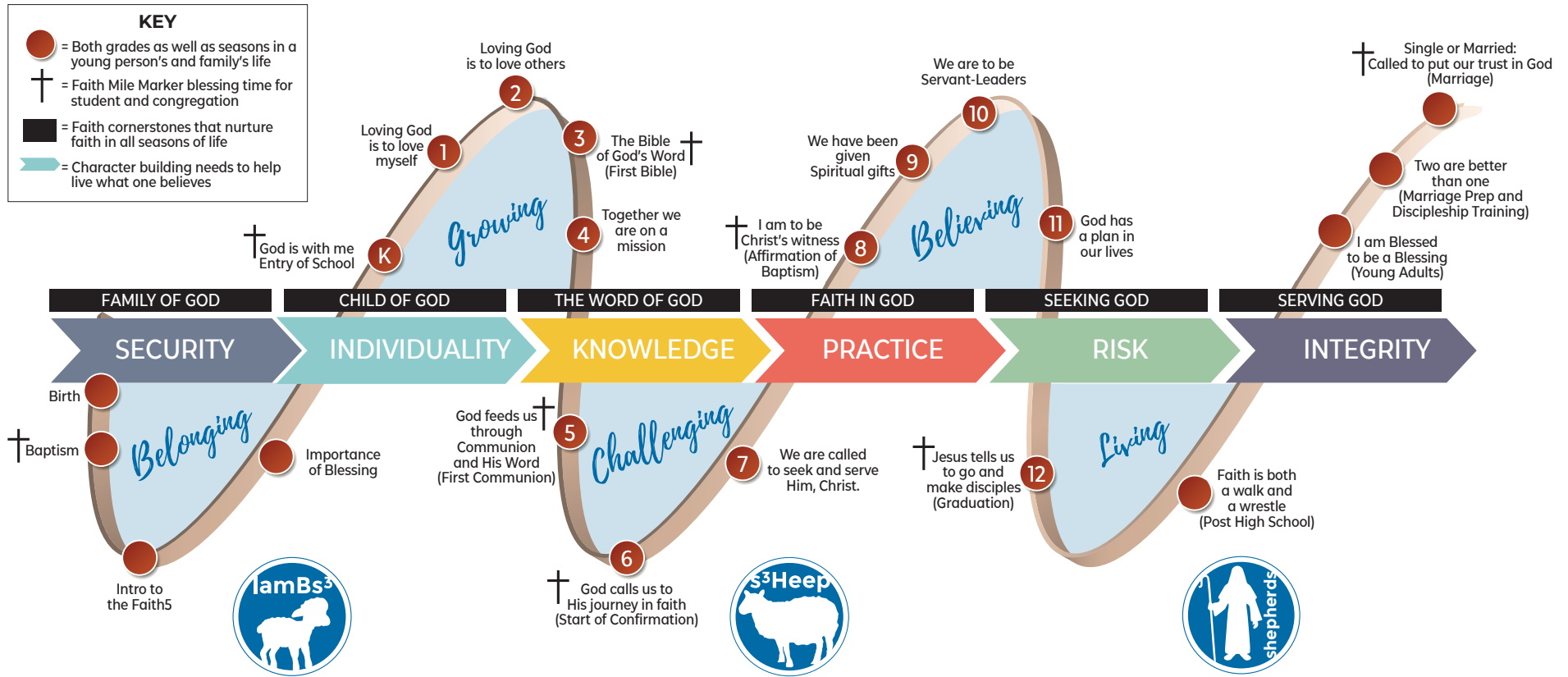


St. John's Children and Youth

DISCIPLESHIP PATHWAY: BUILDING FAITH AND CHARACTER

As the church we are called to "make disciples." We at St. John see disciples as those who worship weekly, walk daily, connect consistently and serve monthly. This continuous cycle of a discipleship pathway gives us an overall BIG picture to aim for. Now imagine zooming down into those individual paths to see starting points, training and equipping spots as well as Mile Markers that show one's movement. This diagram is a closer view of our church's intention, to make children and youth into Jesus followers. (Granted this is only accomplished by the movement of the Holy Spirit but all of us have a role to play as we are a part of His body. Next month, look for our Learning Grid that lays out grade objectives and curriculum plans as we look to reengage more fully in this journey.

Our goal is to have a consistent age targeted Christian Relational Education system that not only builds faith and character in our young people but one that will primarily support & bless families, as they are the key incubators for faith life to flourish.



Shepherds Needed Sunday Mornings & Wednesday Nights:: s3Heep and lambs3 cannot travel alone. We need those who have been down the path already. We need adults and young adults who know how to have fun in the green pastures. One's who have already drunk deeply in the living water and know where to find such refreshment. We need parent and grandparent type people who can lead young people through the dark shadowed valleys as well as know how to celebrate banquet style meals in the midst of one's enemies. We need shepherds for our children and youth who are willing to walk with them on this journey that has eternal significance. We need shepherds who want to serve the Chief Shepherd, Jesus, by Knowing Him and Making Him known in the lives of our children & youth.

Join the Shepherding Team...let Matt know you're in or you want to find out more by emailing him, matt@stjohnlutheran.com

s.h.e.p.h.e.r.d.s. are...

- S** = servant-leaders who nurture others through consistent time & attention.
- H** = helpers who lead small group (2-6) discussions, activities & service projects
- E** = engagers in activities and discussions that build healthy & meaningful relationships
- P** = providers of a listening and empathetic ear to students and their families
- H** = healers by creating safe time and spaces for personal stories to be shared
- E** = encouragers by supporting young people in discovering gifts & developing skills
- R** = reconcilers, open vessels to the Holy Spirit so that He might lead students to the cross
- D** = drivers who lovingly push students to grow in both faith & character
- S** = s3Heep too, because they seek & serve Him every day, everywhere passionately as well.